



**MAISON
& OBJET
PARIS**
OFFICIAL
EXHIBITION



PRODUCED BY
**AKARI-LISA ISHII
& MOTOKO ISHII**

WORLD-LEADING LIGHTING DESIGNER DUO

15-19 JAN. 2026
9:30-18:30 (19 JAN.-18:00)
PARIS NORD VILLEPINTE
PARC DES EXPOSITIONS
HALL2 - K109

Maison & Objet

An exhibition that creates trends in interior space, design, and high-end lifestyle.

Opinion leaders including distributors, renowned companies, hotels, designers (architecture, interior design, etc.), and journalists gather.

300,000 buyers from over 150 countries attend the fair.

Online Edition: **MOM** (Maison&Objet and More)
Synergizes with an active complementary website (3 million annual visits) throughout the year.

The January and September exhibitions are **places to discover tomorrow's trends** through special experiences.

January 2026 Theme: Revealing the Future from the Past



Official Exhibitions

Organized by Maison & Objet, trendsetters propose official exhibition for visitors:

What's new

Light Trend

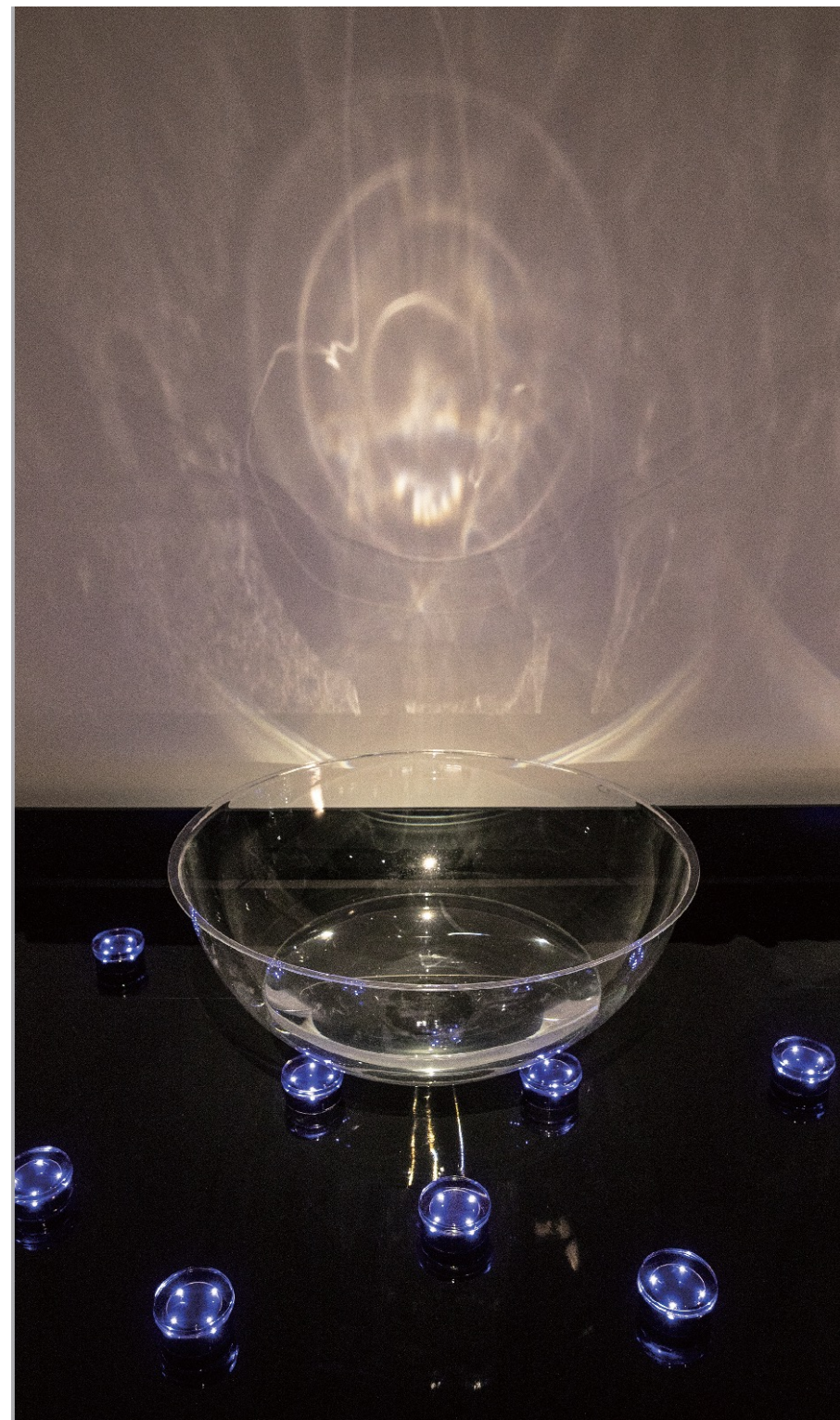
Interior Studio

Curatio

Outdoor Art

Excellent Manufacturers

Rising Talent etc.



Focus on the light

In design and decoration, especially in the luxury sector, **lighting plays an increasingly vital role.**

Since 2013, **an official exhibition dedicated to lighting design** has invited lighting designers to a stand of approximately 100 square meters.

Hall 2 SIGNATURE & PROJECTS

A hall centered on interiors, design, and technology, aiming for a fusion of iconic design, luxury, boldness, and elegance.

A prime location **along the red carpet** where key exhibits converge

Target Audience: Specialists, Space Planners, Project Managers, Building Owners, Architects, Leading Companies, etc.



Light Trend

Since 2013, every year, both **Motoko Ishii** and **Akari-Lisa Ishii** have been invited by the organizers of Maison & Objet as **guest designers** to produce **the official theme exhibition** “Light Trend,” which highlights the importance of light in interior design and high-end lifestyles.

Each edition introduces **lighting design trends** from a fresh perspective, centered on the concept of a “**sensory journey filled with light**” through **artistic installations and cutting-edge technology**. The exhibition meticulously crafts the following approaches:

- Light experiences where art, ingenuity, and technology converge
- Exhibits designed to learn about and enjoy techniques
- Sharing lighting designers' expertise



Intentions

The latest information and application methods that both producers deem essential lighting knowledge you **“must know now”**.

- Diversity in light-artistic expression
- Materials that harmonize with light
- Atmosphere and accent effects through lighting
- Integration into interior design
- Latest trends in lighting design and technology

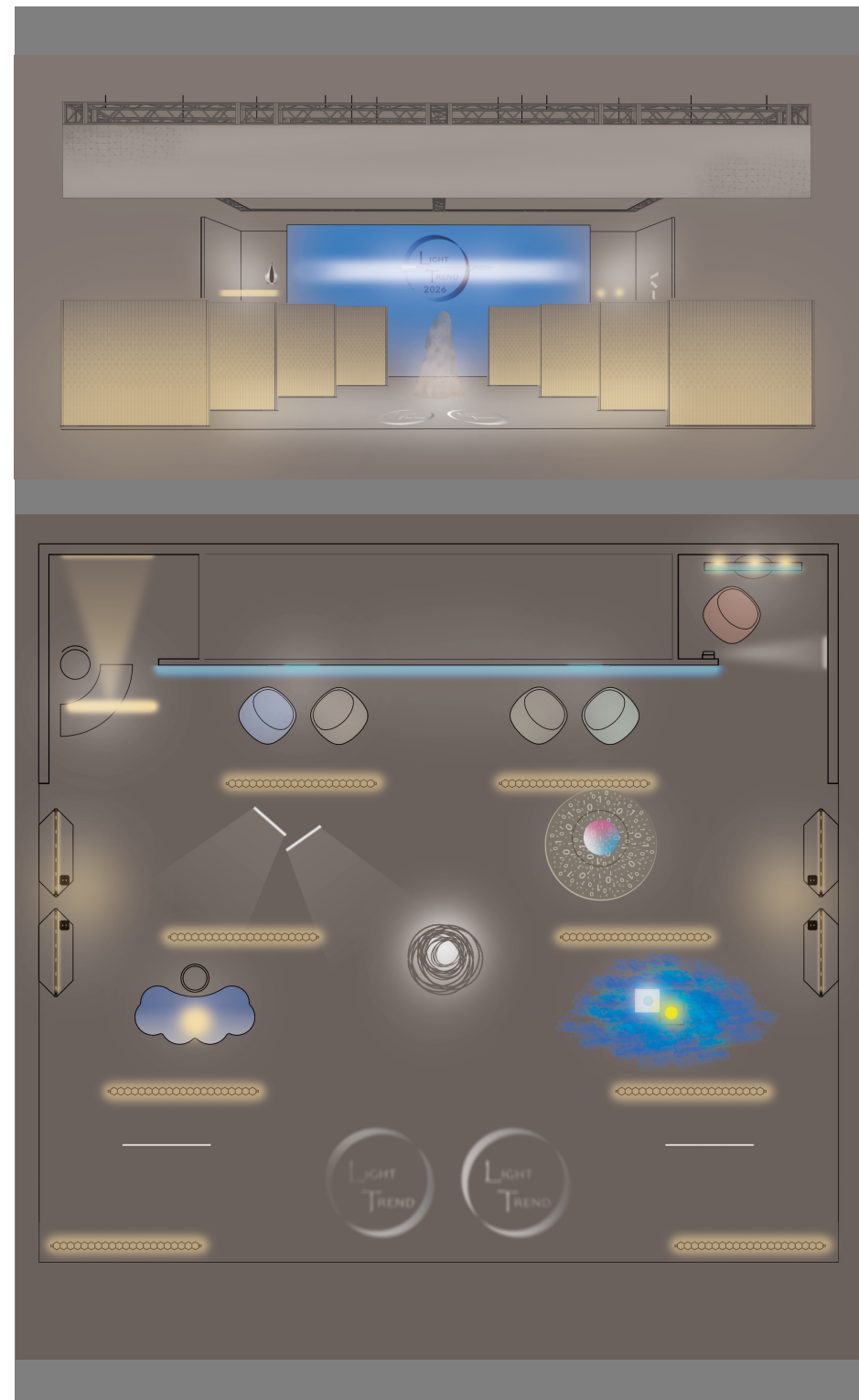


Horizon

The theme for the 2026 Light Trend is “**Horizon**”.

Amidst rapidly changing society and technological progress, this light space is designed with a concept that embodies the importance of maintaining a broad perspective and vision for the future. It incorporates inspiration drawn from **gazing toward the distant horizon**, scattering that inspiration throughout the design.

- A four-layer stand structure featuring partitions that softly and brightly envelop the space
- High-design furniture and lighting fixtures
- Light installations crafted from diverse materials and their effective utilization
- Light artworks employing shadow, reflection, and transparency
- Fixtures utilizing the latest lighting technology
- Three new videos introducing “What Lighting Design Can Offer”



Layer 1

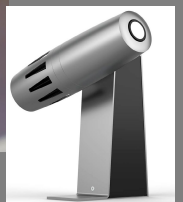
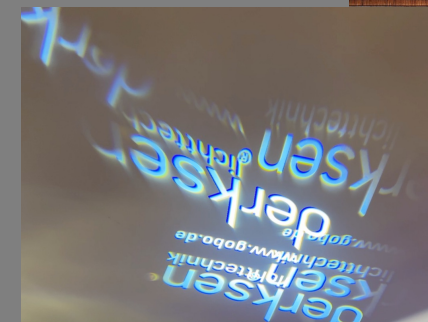
View of the Horizon

At the main entrance of the stand, Layer 1 welcomes guests with the soft light of the **Accordion Partition** (Okamura + Nabell) and the floor projection of the stand logo, resembling waves lapping ashore, created by the latest prism projector **Phos 45 Move** (Derksen).

From the ceiling drops the textile **Nevicaba** (Deder), inspired by origami, framing the proscenium.

The accordion partitions were specially designed and developed for this exhibition, showcasing four variations (KOYUKI, ARARE, SHIZUKU, HISIRA) with distinct shapes of the notches on the bellows sides.

LED Line Lights (Stanley Electric) illuminate them from the floor level.



Layer 2 - left

Skyfall onto the Horizon

On the left side of Layer 2, the **Swift Table SW Cloud** (Okamura) will be displayed. This original design features a motif of majestic scenery: clouds rising beyond the horizon and rain dripping from them.

It is accompanied by the **Pirouette** chair (Okamura), which can replicate the swaying motion of the waves.

Above, the **Drop by Drop** pendant light (iGuzzini) shaped like water droplets completes the universe.



Layer 2 - right

Pearls under the Horizon

On the opposite side of the same layer, we turn our gaze to the world beneath the horizon. We illuminate crystal balls, likened to pearls, shimmering with light from the ocean floor, using multiple different technologies. **This lighting technique can be applied in art galleries and retail spaces.**

The base is created using the **X-Effects LED Projector** (Rosco), capable of producing the undulating movement of light on the ocean floor.

Above this, the **LEDFOCUS** floodlight (Stanley Electric), capable of achieving one of the world's narrowest beam angles, illuminates two types of pearls with distinct gold and silver light. This gold LED was developed for the special Eiffel Tower illumination during Japonisme 2018 and is a rare product worldwide.

For the pearl lighting, the **Lite Pad** (Rosco) and the ultra-compact display lights **Aria** (DGA) add accent lighting.



Layer 3 – left & center

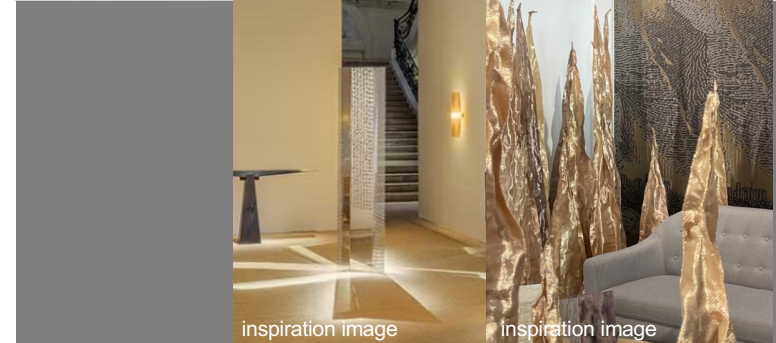
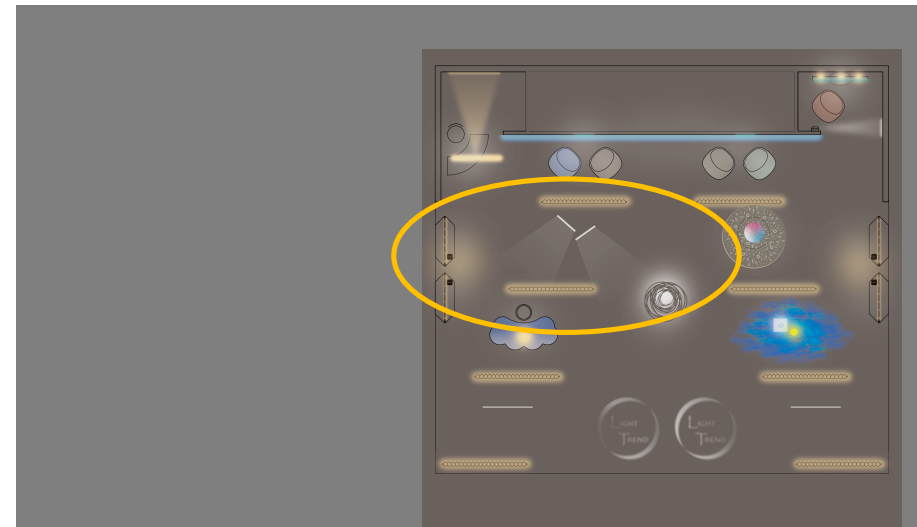
Insight on the Horizon

The half of the next layer introduces **the relationship between various materials and light**, using artworks created specifically for this exhibition.

First is a partition featuring flexible solar panels arranged in a shoji-style pattern, carrying on the Japanese tradition of enjoying diffused light. These include **Solar Kichō Colleagues** (Okamura + F-wave), whose name symbolizes the gathering of panels and technology, and **Washi Kichō Cosmos** (Okamura + Sugihara Shōten), a handmade Echizen washi paper piece evoking a planet. Electricity generated by solar power is stored in the **OC Portable Battery** (Okamura).

Other original artworks will also be on display, including a hanging scroll-style art object that effectively utilizes reflected light, and light sculptures where colored transmitted light gives the pieces dynamic expressions.

Lighting features the **Palco Framer** spotlight, which allows beams to be cut into any shape, and the **Agora**, which enables flexible color control (both by iGuzzini).



Layer 3 - right

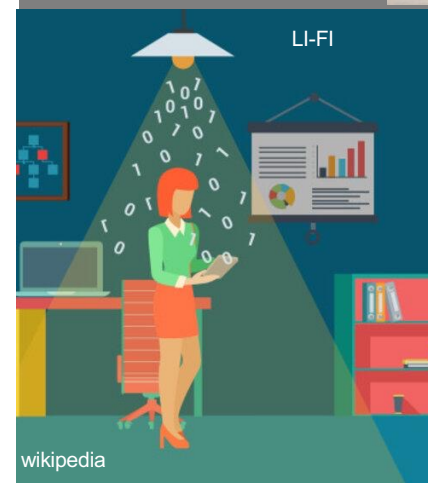
Message from the Horizon

In the next section, we introduce **Li-Fi, a future communication technology using light** that is gaining attention.

This technology enables data communication by having a receiver pick up signals emitted from LEDs used in lighting fixtures. It offers advantages not found in Wi-Fi: it can be used in places where electronic device usage requires caution, such as inside aircraft or hospitals, without causing radio wave interference, thereby minimizing potential harm to the human body. Furthermore, since communication is only possible within the range of the light, data security is guaranteed.

Here, we symbolically showcase the potential of this cutting-edge light technology through a demonstration where music data downloaded via Li-Fi is played through a speaker.

The uniquely shaped, luminous speaker **ML-655 BT (Muse)**, resembling a parabolic dish pointed toward the future, plays a theme music composed specifically for this exhibition by the **I.C.O.N. Music Label**.



Layer 4

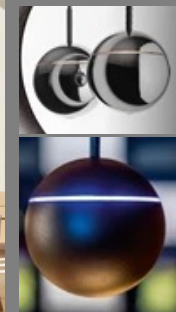
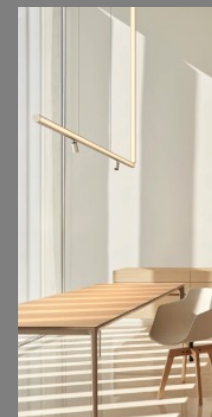
Colors of the Horizon

On the back wall, color lights by **LEDSFOCUS** (Stanley Electric) recreate the ever-changing hues of the horizon. Above them, the cutting-edge floodlight **Variable Distribution Light** (Stanley Electric), capable of altering beam shapes using liquid prisms, literally draws a horizontal line with light.

On the right wall, kinetic light art featuring a horizon motif unfolds, created by another new product, the **LED Drawing Unit** (Stanley Electric).

Above the left reception counter, the **Glowing Track**, hybrid of light track/pendant light—featuring beautiful prism glass—and **Light Shadow** spotlights (both by FLOS) are displayed. In the small room to the right rear, the charming, droplet-like spherical pendant **Snooker** (Prolicht) adds brightness.

Three monitors will show original videos titled “**What lighting design can offer**” by Akari-Lisa Ishii. Visitors are invited to relax and enjoy these while seated on the **Work Carrier Sofa** (Okamura), a chair made from recycled fishing net material.



Producers

Maison & Objet Invited Designers
Motoko Ishii & Akari-Lisa Ishii

International Lighting Designers
Japanese-French Mother-Daughter Duo

- Introducing the latest trends in lighting design
- Masterful skills and constantly renewed creativity
- Emphasizing the importance of light with a new theme each year



Producer

Akari-Lisa ISHII

Lighting designer & principal of I.C.O.N.

The principal designer, Akari-Lisa Ishii, has represented the company I.C.O.N. since its foundation.

She has done international (Japan, the U.S. and France) and interdisciplinary studies in the fine arts, design and lighting. First trained at Howard Brandston & Partners (N.Y.), Motoko Ishii Lighting Design (Tokyo) and Light Cibles (Paris), she founded her company I.C.O.N. in 2004, in Tokyo and Paris.

She quickly became an active member of IALD (International Association of Lighting Designers) and now vice-president of ACE (French Association of Light and Lighting Designers) .

Representative projects include the Yves Saint Laurent Museum Marrakech, Dior Perfumes worldwide boutique chain, the Woodward hotel in Geneva, the classified cloister la Psalette of the Cathedral of Tours, the Coca-Cola Paris office, the English garden in the Domain of Chantilly, urban spaces and landscapes in many regions of France, exhibitions at major museums in Paris such as Grand Palais and Quai Branly, the Hermes Pavilion Baselworld and diplomatic light and sound events on the Eiffel Tower and the Brandenburg Gate among others.

She is also a product designer and author of four books: *Creation Lumiere* (published in 2025 in France), *ICONIC LIGHT*, *My Work: Fascinated by Light*, *The City and Light*.



Producer

Motoko ISHII

Lighting designer & principal of Motoko Ishii Lighting Design

Motoko Ishii has managed the company Motoko Ishii Lighting Design since its creation in 1968 (Tokyo).

She is also:

Honorary Director, Japan International Association of Lighting Designers (IALD Japan); Honorary Chairperson, Asian Lighting Designers' Association (ALDA); Fellow, International Association of Lighting Designers (IALD) Member, Illuminating Engineering Society of North America (IESNA); Member, Japan National Committee of CIE; Honorary Member, Illuminating Engineering Institute of Japan; Representative, Inter Light Forum.

Main works: lighting design for Tokyo Tower; Rainbow Bridge in Tokyo; Yokohama Bay Bridge; Akashi Kaikyo Bridge; Tokyo Gate Bridge; Himeji Castle; Shirakawa Village, Gifu; Sensoji Temple; Expo 2005 Aichi, Japan; Hokkaido Toyako Summit; Heijo-kyo Daigoku Palace; Ginza Kabukiza Theater; Shanghai World Financial Center, Shanghai; Kokyo Gaien National Garden; Nippon Budokan; Sumida River Bridge Group and others.

Books: *In Praise of Lighting*, *MOTOKO LIGHT+SPACE+TIME*; *Lighting Horizons*; *Creation of Lightscape*; and *MOTOKO ∞ LIGHTOPIA*, a showcase of works from her 50-year career and her latest works published in 2020.



Partners

This exhibition showcases **lighting design that blends technology and artistic expression**, both now and in the future.

To achieve this, reflecting the designers' transnational design philosophy spanning Japan and Europe, we develop and exhibit not only lighting fixtures from international manufacturers but also materials, furniture, and objects that harmonize with light.

Together with partners from various fields, we exhibit the **latest technology and the finest products**.



STANLEY

OKamura

F-WAVE™

NABELL®

科
WASHIYAMA
SUGIHARA

iGuzzini

FLOS

ROSCO

PROLICHT

DGA

derksen®
lichttechnik

DEDAR
MILANO

MUSE
Collection of inspiration

Tokyo
Tokyo



**INTER LIGHT FORUM
JAPAN**

Information

Contact Information

Tokyo: Motoko Ishii Lighting Design
Yukari Ando
Tel +81-(0)3-3353-5311
light@motoko-ishii.co.jp

Paris: I.C.O.N.
Kanao Sano
Tel +33 6 60 26 32 97
contact@icon-lighting.com

www.lighttrend.fr

Detailed Information
Press Document Download Link
Latest Videos & Images Uploaded Regularly
(Via the button at the top right of the homepage)

